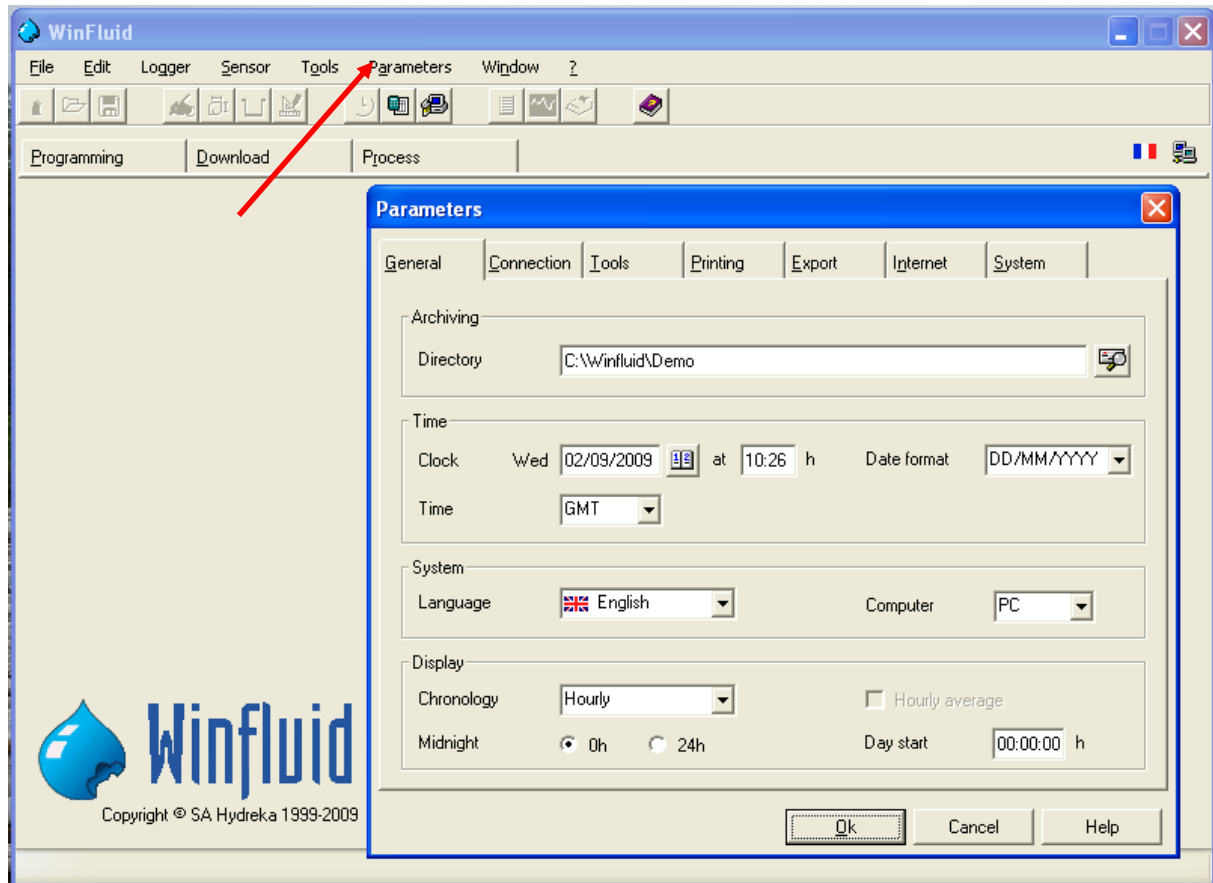


Getting started with the Vistaplus / LoLog 450

1 STEP 1 : Winfluid configuration

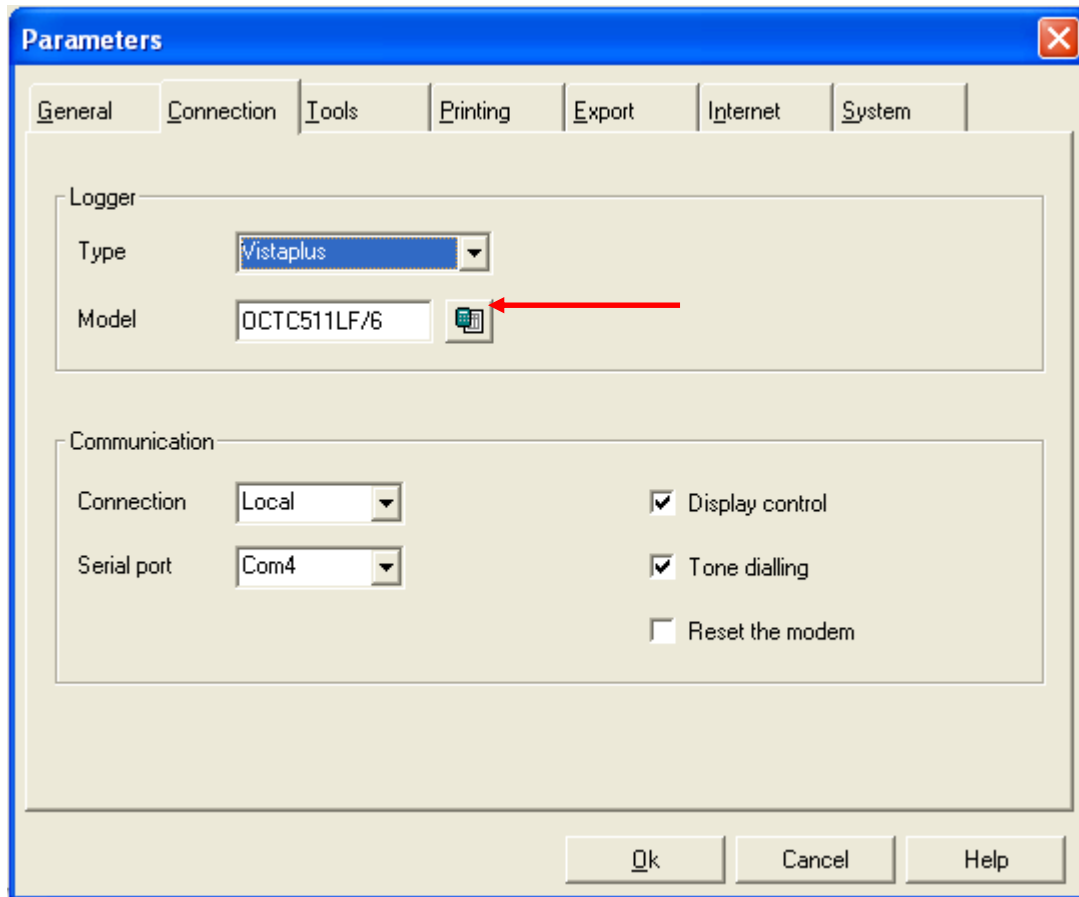
Once Winfluid correctly installed you have to define Winfluid general settings.
Go to parameters / General.



- **General:** You define here the directory where you will save your data on the hard disk. You can change the date and time and the language.
- **Connection:** You define with what type of logger you are going to communicate with (download or program).

Once «Vistaplus » selected you can auto detect the logger model or fill the cell with details written on the logger.

NB : You need to be connected to the logger to AutoDetect the model (see red arrow below) and to make sure that you have selected the right serial port.



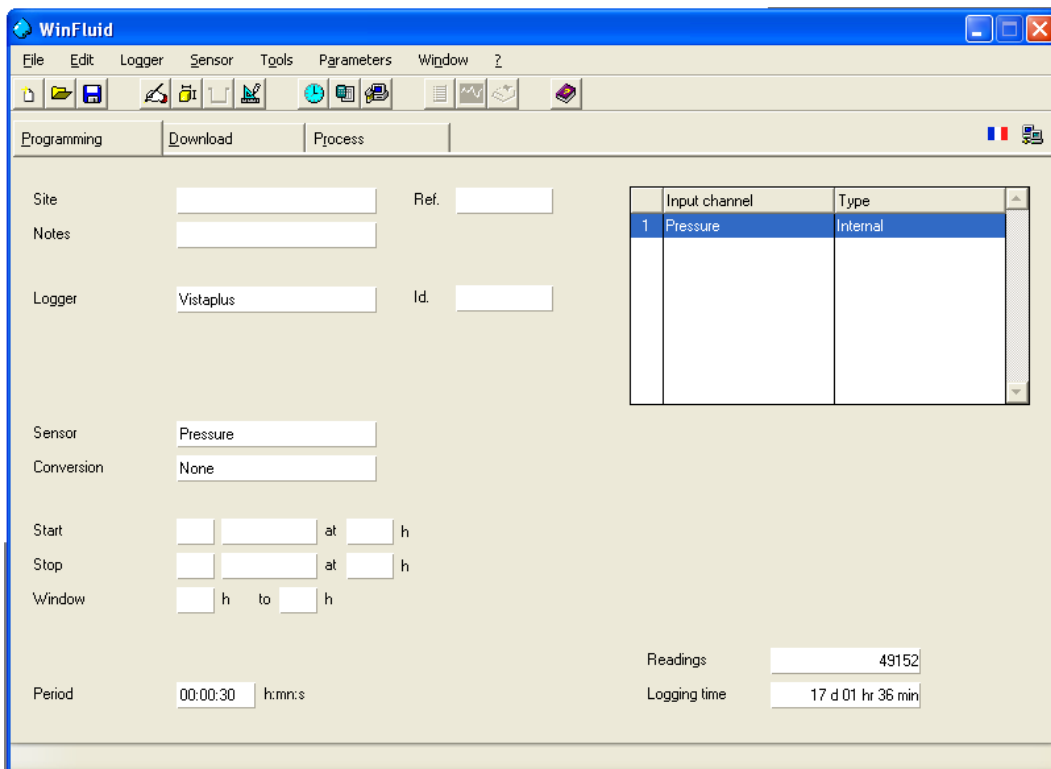
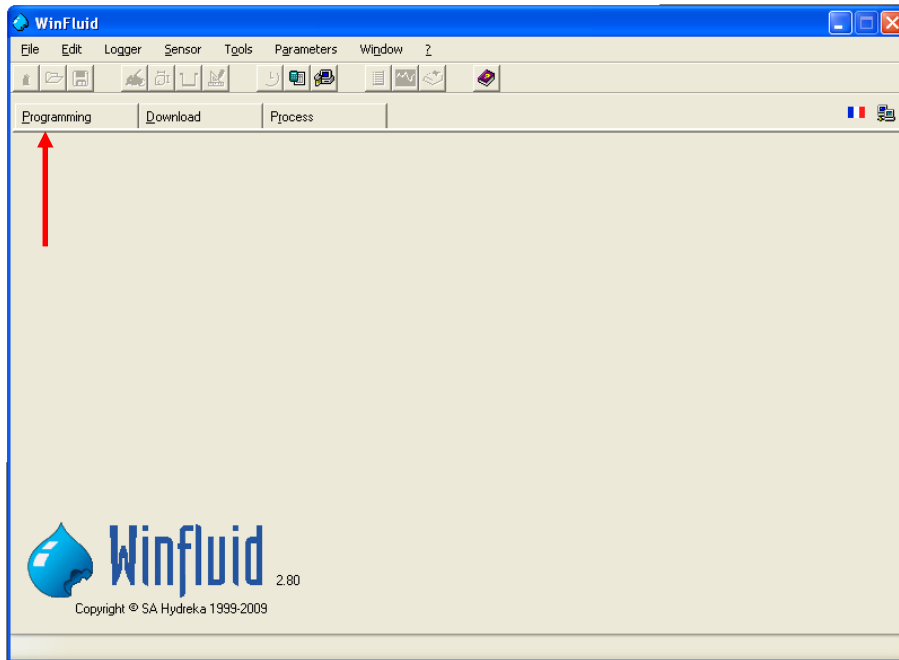
- **Tools, Printing, Export, Internet, System:** no relation with the programming of the logger.

Once completed click OK.

NB: Every time you will connect to a logger to program or download, it's advised to follow the same way to do it: Parameters/connection/type of logger/ auto detect once connected.

II STEP 2 : Logger settings

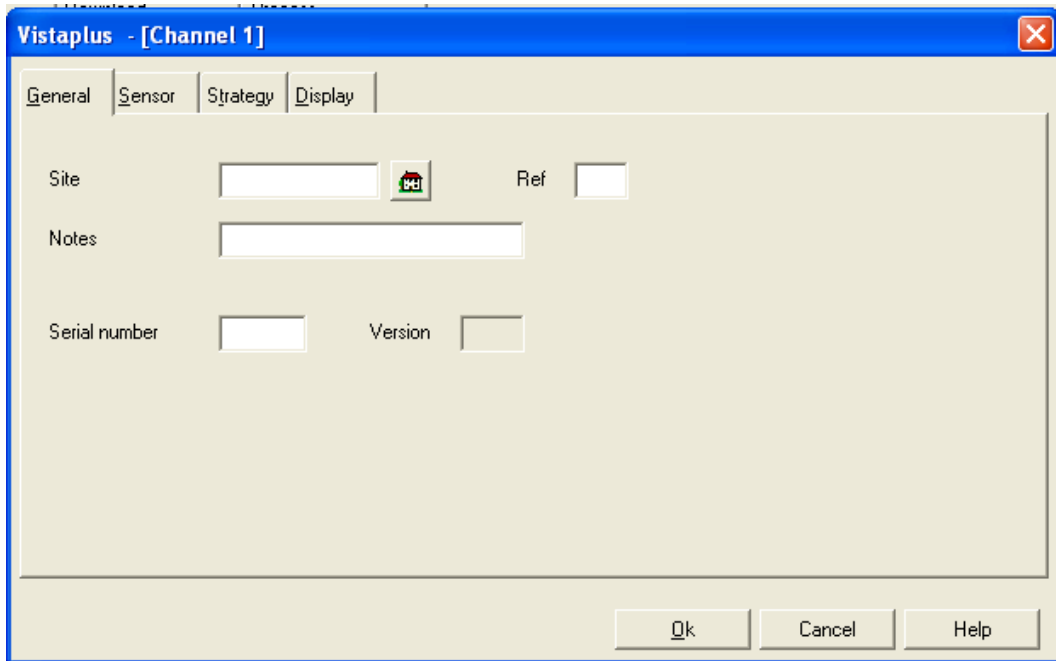
The main screen gives you access to 3 main menu: **Programming, Download & Process**. As you already informed Winfluid with what type and model of logger you are going to work, you just have to click on the programming menu.



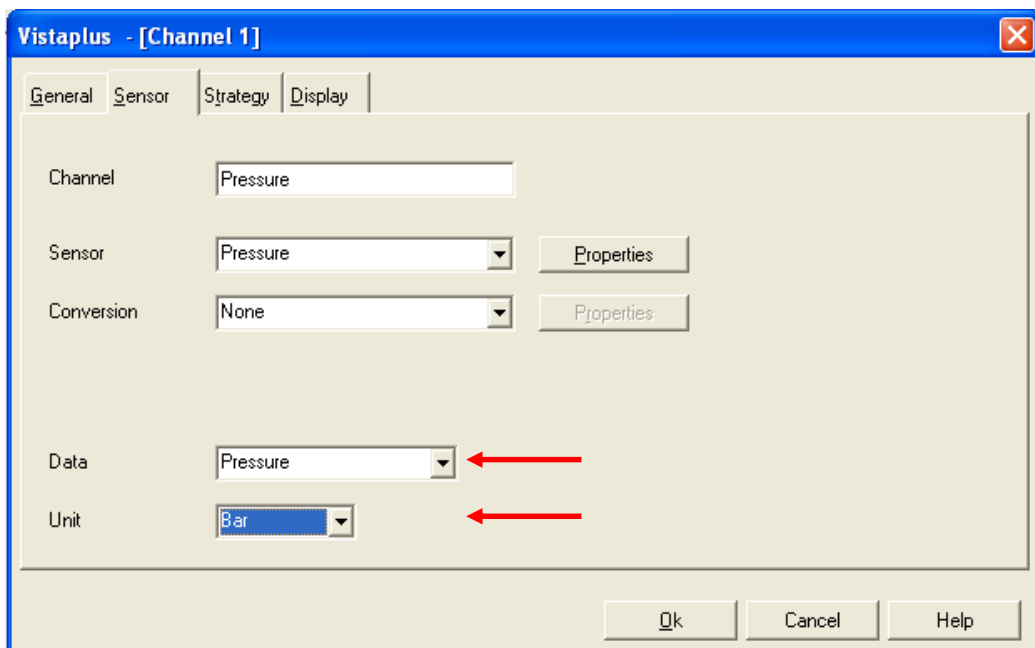
« Blank programming »

Pressure input channel:

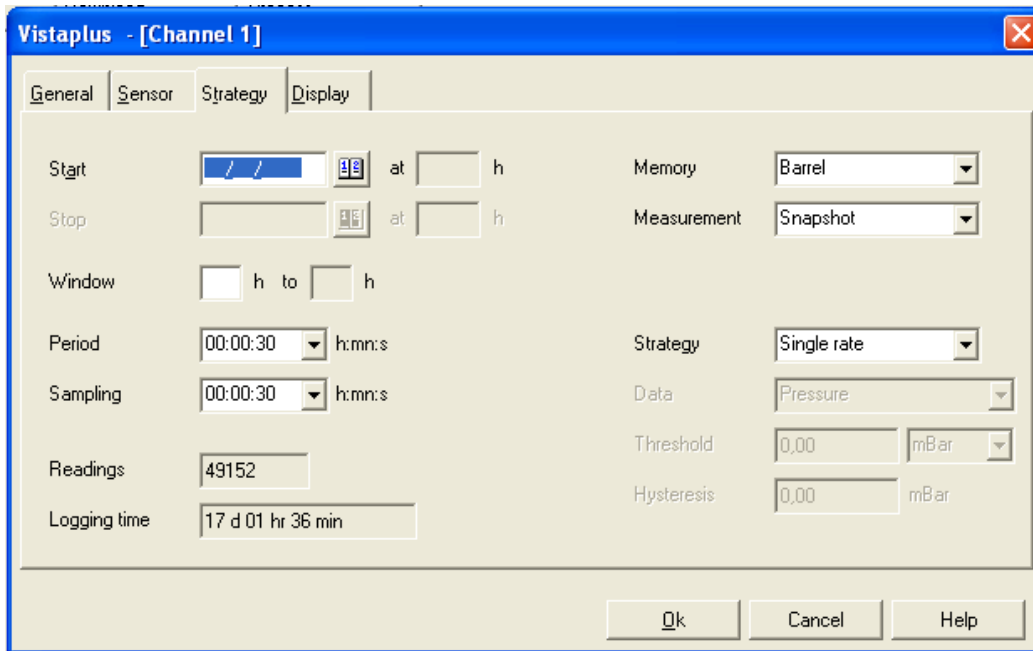
You can now double click on the input channel (highlighted in blue) or click Edit/input channel.



- **General:** Enter the site name (limited to 8 characters). If you want to enter more details you can use « notes »
Do not fill Ref and Serial number (Automatic when communication with the logger)



- **Sensor:** As you are working with an internal pressure sensor, you just need to select what kind of data and unit you want to log.



➤ **Strategy:**

Start/Stop: You can define a start and stop time otherwise the logger will start right away by default

Memory: Barrel, always logging and overwrite when full.
Stopped, memory stops when full.

Measurement: Snapshot and average depends on your period and sampling.

Strategy: NA

Window: NA

Period: Measurement interval of your data

Sampling: If you wish, you measurement can be an average calculated from a smaller interval. This will define automatically if the measurement is « Snapshot or average ».

Readings: Number of readings available.

Logging time: Numbers of recording days available, depends of you period.

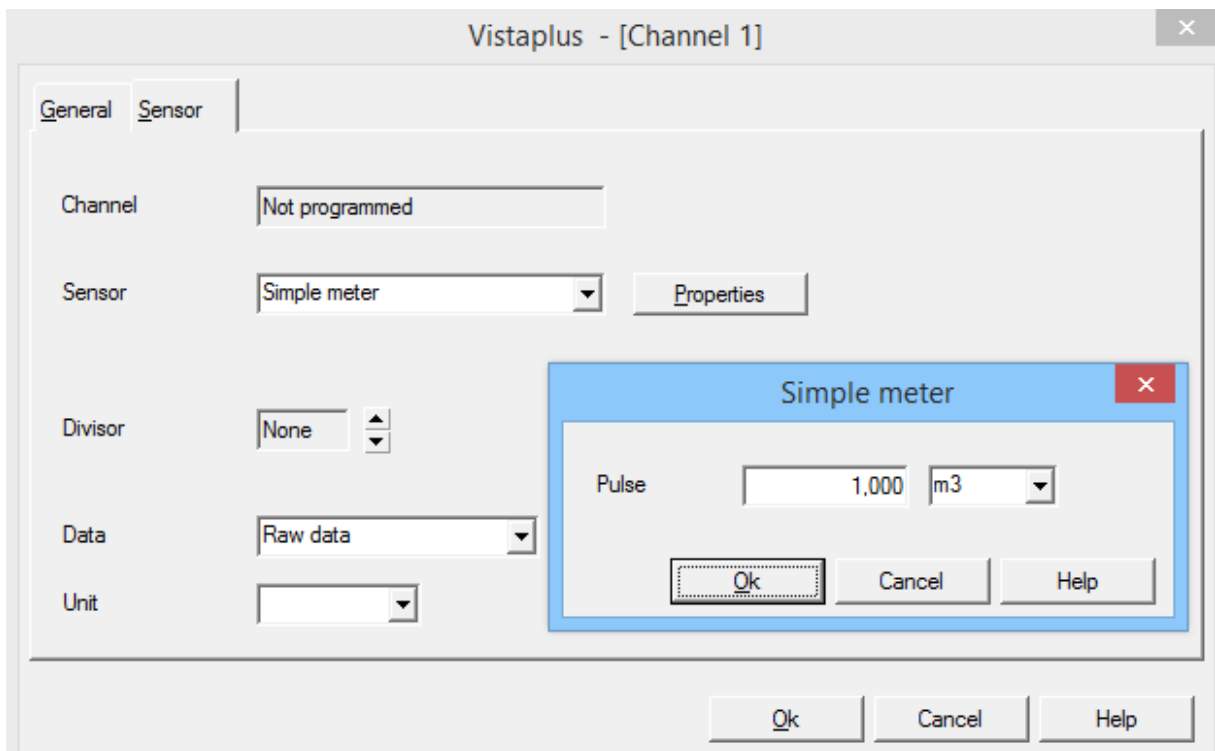
➤ **Display : NA**

Press Ok once completed.

Digital input :

Channel 2 configuration (digital) to log pulses (Wiring diagram at the end of this document)
Double click on the digital channel, a dialog box appears:

- **General :** Same as channel 1
- **Sensor:** select *Simple meter*. Set the pulse value and unit



- Set the data and unit

- **Strategy:** If you want the data logger to start recording immediately, do not input the start/stop option, otherwise define the recording period.

Vistaplus - [Channel 1]

General | Sensor | Strategy | Display

Start: // // at h

Stop: at h

Window: h to h

Period: 30 sec

Sampling: 30 sec

Readings: 49152

Logging time: 17 d 01 hr 36 min

Memory: Barrel

Measurement: Snapshot

Strategy: Single rate

Data: Volume

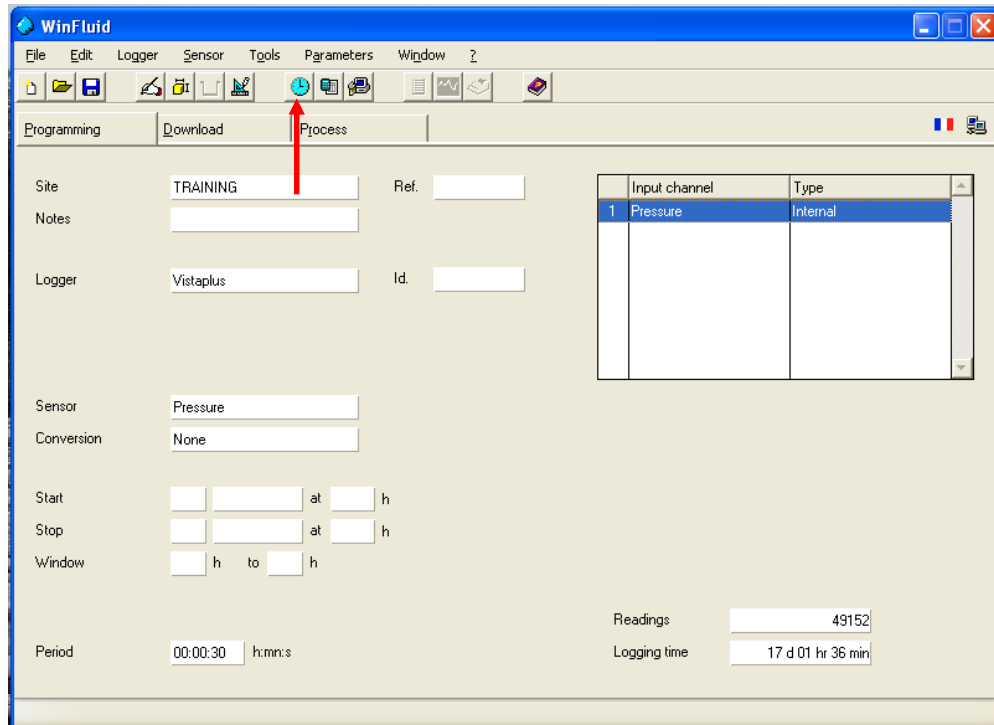
Threshold: 0,00 m3

Hysteresis: 0,00 m3

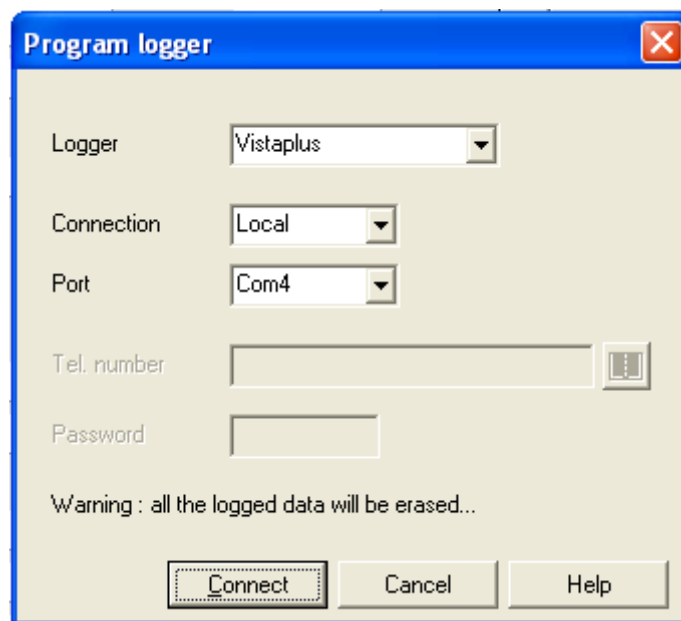
Ok Cancel Help

- Period: logging interval
- Sampling: sampling interval only available if “measurement” option is set as average
- Memory: If barrel selected, data logger will overwrite first data when memory is full. If stopped selected, data logger will stop logging when memory is full
- Measurement: snapshot or average. Only available with analog inputs
- Strategy: Allows to set up two logging intervals based on a defined threshold

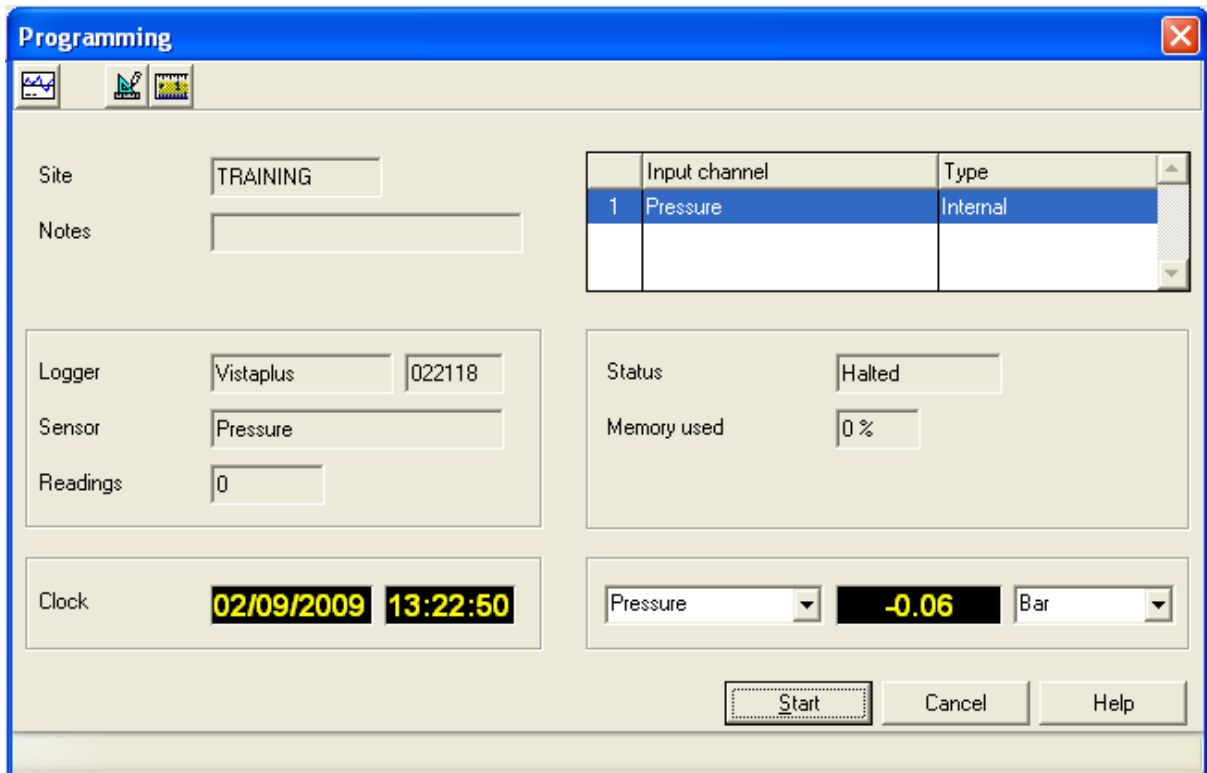
Confirm the dialog box by clicking OK



The programming set up is now ready to be sent to the logger by clicking the blue shortcut Icon or « logger / program »



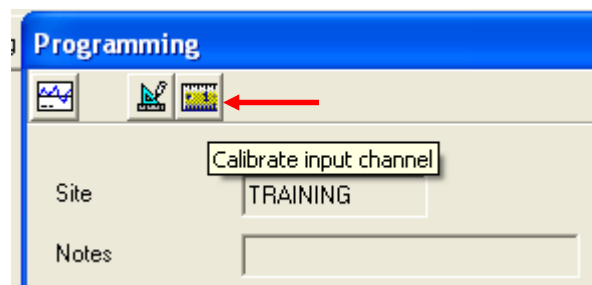
Just click « Connect » as Winfluid already now with what type of logger you are going to communicate.



You are now in real time communication with the logger but the logger is not started yet. As working with an internal pressure sensor you have the possibility to calibrate it.

In this example the value is -0.06 bar.

To make the zero, click the third icon on the top left hand « calibrate input channel »



Calibration offset

Measured value	Real value
Pressure: -0.06 Bar	Pressure: 0.00 Bar
Height: -0.59 m	

Buttons: Calibrate, Measure, Default, Ok, Cancel, Help

You can now enter 0.00 (highlighted in blue) and press « calibrate » and Ok.

Programming

Site: TRAINING

Notes:

Input channel	Type
1 Pressure	Internal

Logger: Vistaplus 022118

Sensor: Pressure

Readings: 0

Status: Halted

Memory used: 0%


Clock: 02/09/2009 13:33:55

Pressure: -0.00 Bar

Buttons: Start, Cancel, Help


Now that the value is correct, you can press « start » to start the logger. **If you don't press start but cancel or you close the window, the logger won't start and will not record any data.**

III Real time display and download :

To check if the logger is correctly started, connect to the logger and click this icon 

You have to make sure that the status is « recording » and not « halted »

Press cancel to exit or « download » to download the data.

Once the data downloaded, always make sure to press this icon:  to save it.

Vistaplus technical specifications

Digital channel connections

Pin	Function
A	Direction
B	Digital channel power
C	Common
D	Channel input

Input type :

- Contact
Dry contact
- Voltage

WARNING : input voltage must not exceed 12 volts.