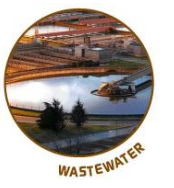


Integrated measuring systems for the whole water cycle



Pressure transducers

PTX/PDCR 1730



PTX



PDCR



Sink Weight

Rugged structure

High performance for accuracy

Ø 17.5mm

Available for current or voltage output



HYDREKA
www.hydreka.fr

Applications

Fully submersible pressure sensor for:

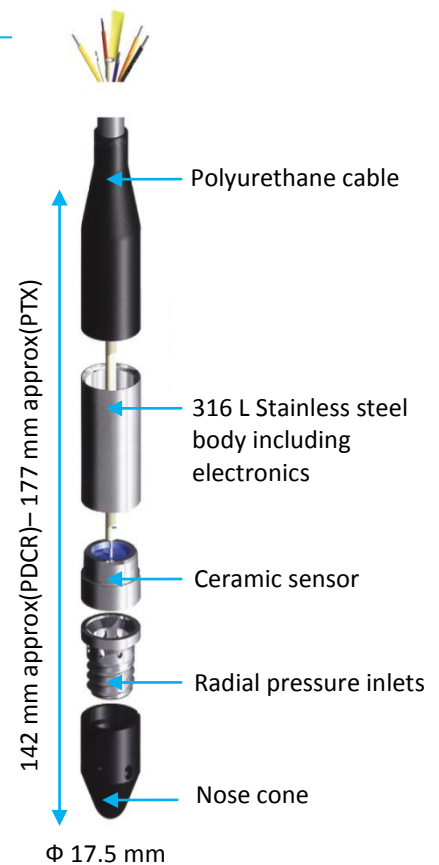
- Potable water network monitoring
- Sewer network monitoring
- Water bodies monitoring
- Aquifer monitoring

It can be used for height/flow conversions:

- Calibrated dams (weirs...)
- Venturi channels

Advantages

- Rugged structure
- Waterproof structure (due to high pressure polyurethane injection)
- High performance accuracy, stable over extended lifetime
- Kevlar® strain relieved vented cable, supporting more than 50 kg (22.7 lb)
- Cable clamp system for waterproofing
- Interfaced with HYDREKA data loggers



Technical specifications

Accuracy	Combined effects of Non-linearity, Hysteresis and Repeatability: +/-0.25% FS BSL max Temperature Effects : +/-0.5% Typical FS Temperature Error Band (TEB) Long-Term Stability : +/-0.2% FS typical per annum
Pressure ranges	3.5 ; 7 ; 10 ; 35 ; 70 ; 100 ; 150 ; 200 ; 350 ; 600 mH ₂ O (350 mbars; 700 mbars; 1 Bar ; 3.5 Bars ; 7 Bars ; 10 Bars, 15 Bars, 20 Bars, 35 Bars, 60 Bars)
Operating temperature range	From -20°C to 60°C
Compensated Temperature Range	From -2°C to +30 °C
Overpressure	The operating FS pressure range can be exceeded by 4 x F.S. with negligible effect on calibration for 350 mBars range and by 2 x for other ranges
Media Compatibility	Fluids compatible with 316 stainless steel (body), polyurethane or Hytrel® 6108 (cable) and EPDM (nose cone)
Excitation Voltage	PDCR : 10 VCC/VDC at 1 mA nominal PTX : 9 to 30 VCC/VDC across terminals
Output Signal	PDCR : 50 mV for 350 mBars range 100 mV for 700 mBars range and above PTX : 4 to 20 mA proportional, for zero to FS pressure (2 cables)
Diameter	∅ 17,5 mm (PDCR and PTX)
Length	142 mm (PDCR) / 177 mm (PTX)
Pressure Connection	G1/4 (female) with recessed open face diaphragm, fitted with 6 mm protective EPDM nose cone
Water Ingress Protection	IP 68 to 700 mH ₂ O.
CE Compliance	ATEX Directive, EMC Directive, Pressure Directive
Accessories	Slim line sink weight / Pressure balance device/ Installation accessories

Available for sale and rental. Please contact us for more information.

HYDREKA
www.hydreka.fr

34, Route de Saint Romain – 69450 – st Cyr au Mont d’Or – France
Tél +33 (0)4 72 53 11 53 – Fax +33 (0)4 78 83 44 37 – e-mail : hydreka@hydreka.fr

A HALMA COMPANY